

# Gippsland Forest Dialogue



Engage • Explore • Change



# Acknowledgement of Country





# Summary of field trip







# DEFINING A HEALTHY FOREST/FUNCTIONING ECOSYSTEM

GIPPSLAND FOREST DIALOGUE ORBOST





# HEALTHY FOREST/FUNCTIONING ECOSYSTEM

- OBSERVE THE NATURAL EVOLUTIONARY PROCESSES OVER A LONG PERIOD.
  - ASK WHY?
- MANY OF THE ANSWERS TO A HEALTHY FOREST ARE OBVIOUS.
- TWO IMPORTANT FACTORS, STRUCTURE AND SURVIVAL, REPRODUCTIVE CAPACITY TO CYCLE

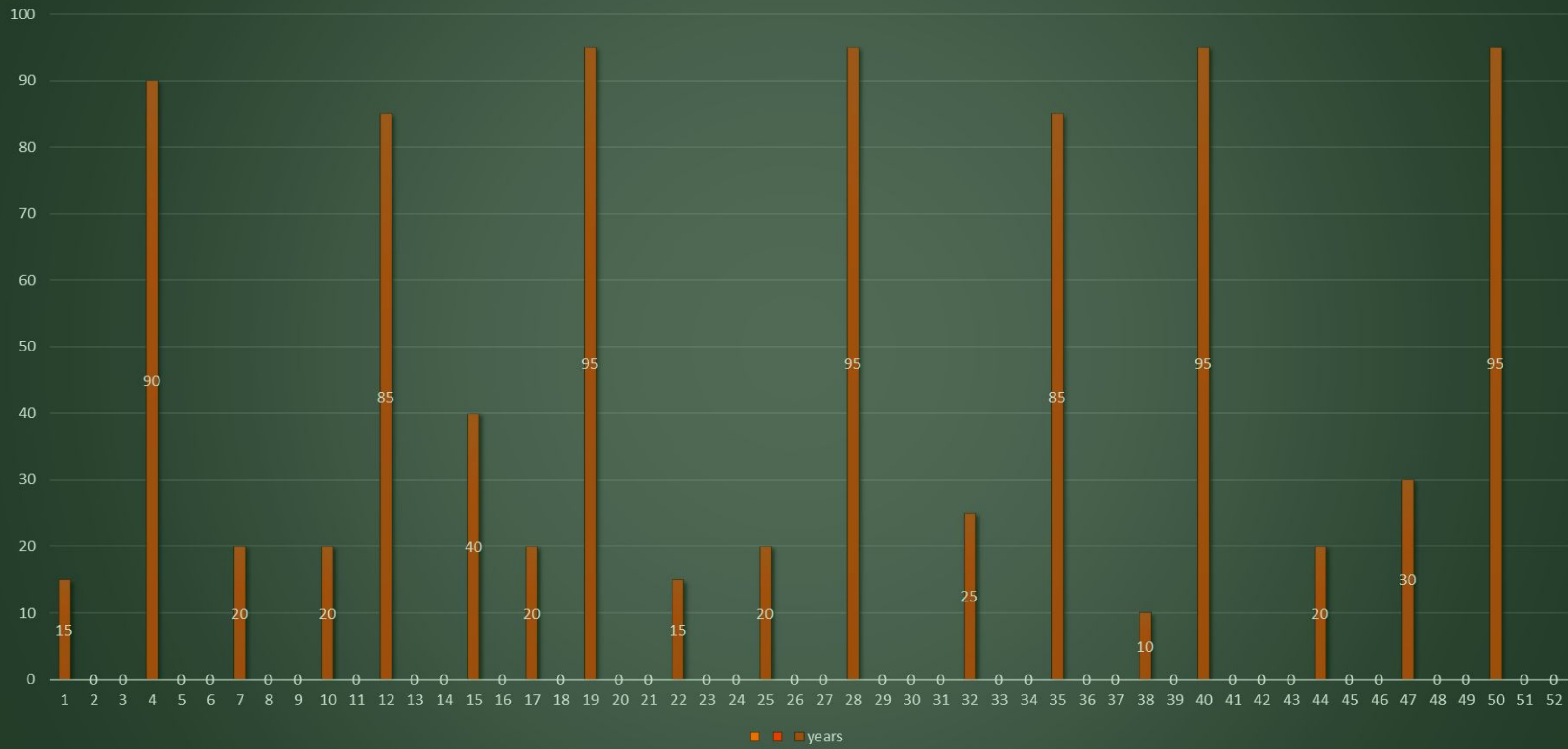




**REPRODUCTIVE CYCLE, NEW GROWTH, BUDDING OCCURS, FOLLOWED BY FLOWERING AND THEN SEED**



# REPRODUCTIVE CYCLES OF EUCALYPTS IN A STRUCTURED FOREST



REPRODUCTIVE CAPACITY TO CYCLE



# COULSON'S TRACK REGROWTH



TYPICAL EUCALYPT REPRODUCTIVE CYCLE AT COULSENS ROAD (LEMSF)



# MOUNT BUCK REGROWTH



REPRODUCTIVE CAPACITY TO CYCLE





**A NATURAL EVOLUTIONARY PROCESS THAT HAS HAPPENED FOR THOUSANDS OF YEARS**





**EPICORMIC GROWTH ON AN AMAZING TREE STRUCTURE**





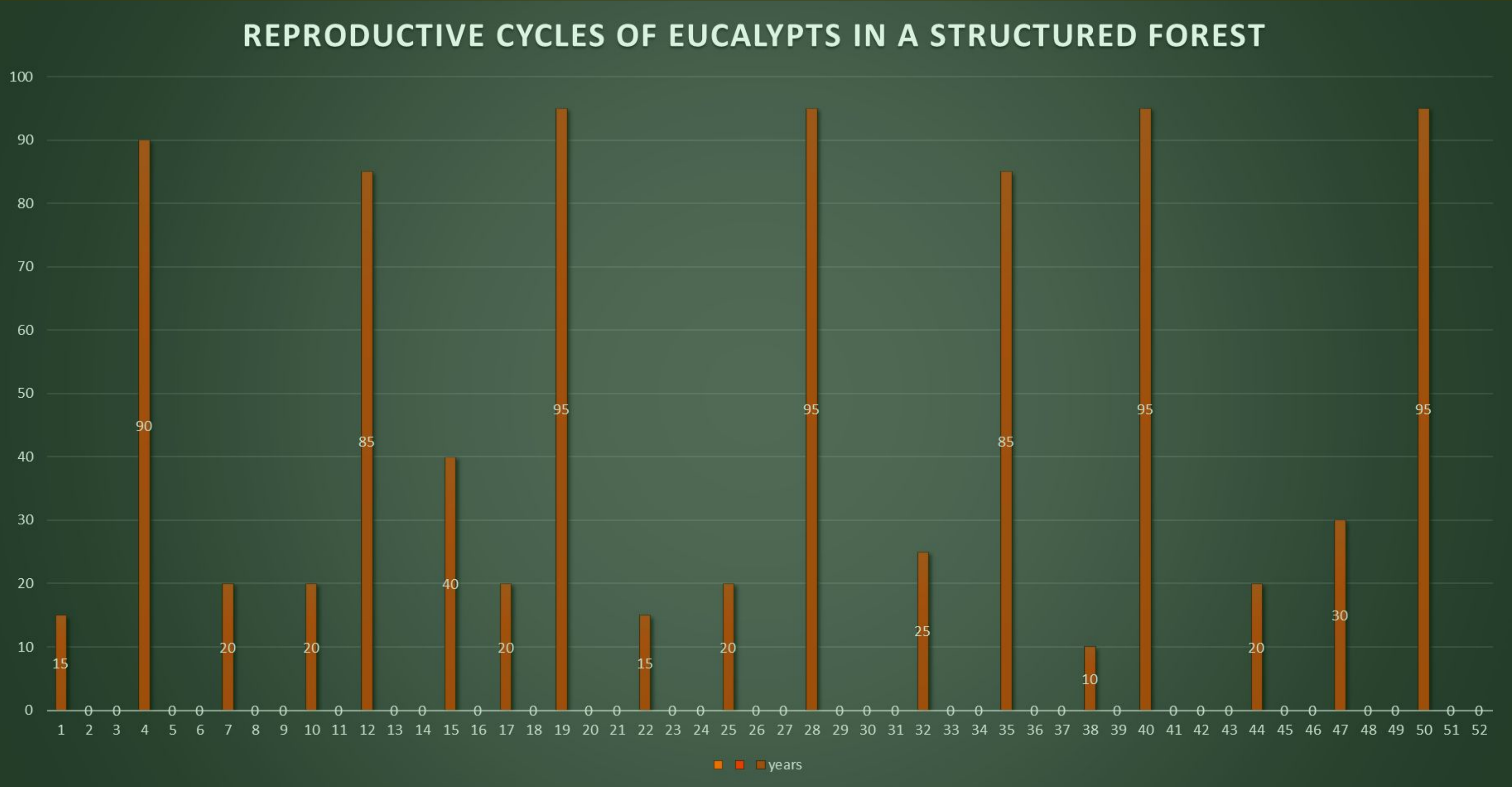
**REGROWTH KILLED OUTRIGHT BY THE 2019 WILDFIRE, NO EPICORMIC SHOOTS!**





**ANOTHER AREA OF REGROWTH KILLED, NO EPICORMIC SHOOTS.**





TYPICAL EUCALYPT REPRODUCTIVE CYCLE AT COULSENS ROAD (LEMSF)





**130 YEAR OLD REGROWTH.**





**ANOTHER EXAMPLE OF DEGRADED FORESTS (ECOSYSTEM FAILURE).**



YEAR	0	5	10	20	30
FIRE	8	8	9	9	9
WATER	8	8	9	9	9
BIO	7	8	9	9	9
REPRODUCTIVE CAPACITY	7	8	8	9	9
CLIMATE ADAPTIVE	8	8	9	9	9
COMMUNITY	7	8	8	9	9
TOTAL	45	48	52	54	54

EXAMPLE OF A FOREST WITH THE STRUCTURE INTACT/SUCCESSFUL ECOLOGICAL RESTORATION



YEAR	0	5	10	20	30
FIRE	7	3	1	1	1
WATER	1	2	2	2	3
BIO	1	1	1	1	2
REPRODUCTIVE CAPACITY	0	0	0	0	0
CLIMATE ADAPTIVE	0	0	0	0	0
TIMBER VALUE	4	0	0	0	0
COMMUNITY	0	1	1	2	2
TOTAL	13	7	5	6	8

COMPROMISED STRUCTURE (COULSONS TRACK)



















**What is a healthy forest?**





# GFD's Next Steps





- Research opportunities where GFD can influence agencies/government/policy development

- How GFD can develop a score card

- Management arrangements

- Research opportunities to come together in a new 2030 world while maintaining forest investment





# Next Steps for GFD

- Next Dialogue (linking to this [Healthy Forests dialogue](#))
- Members (following the next steps from Rawson?)
- Involve others / bring them to the table?



# Thank You



Engage • Explore • Change